

CERTIFIED LAND CORNER RECORDATION

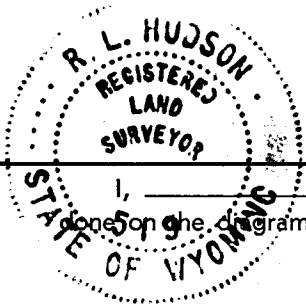
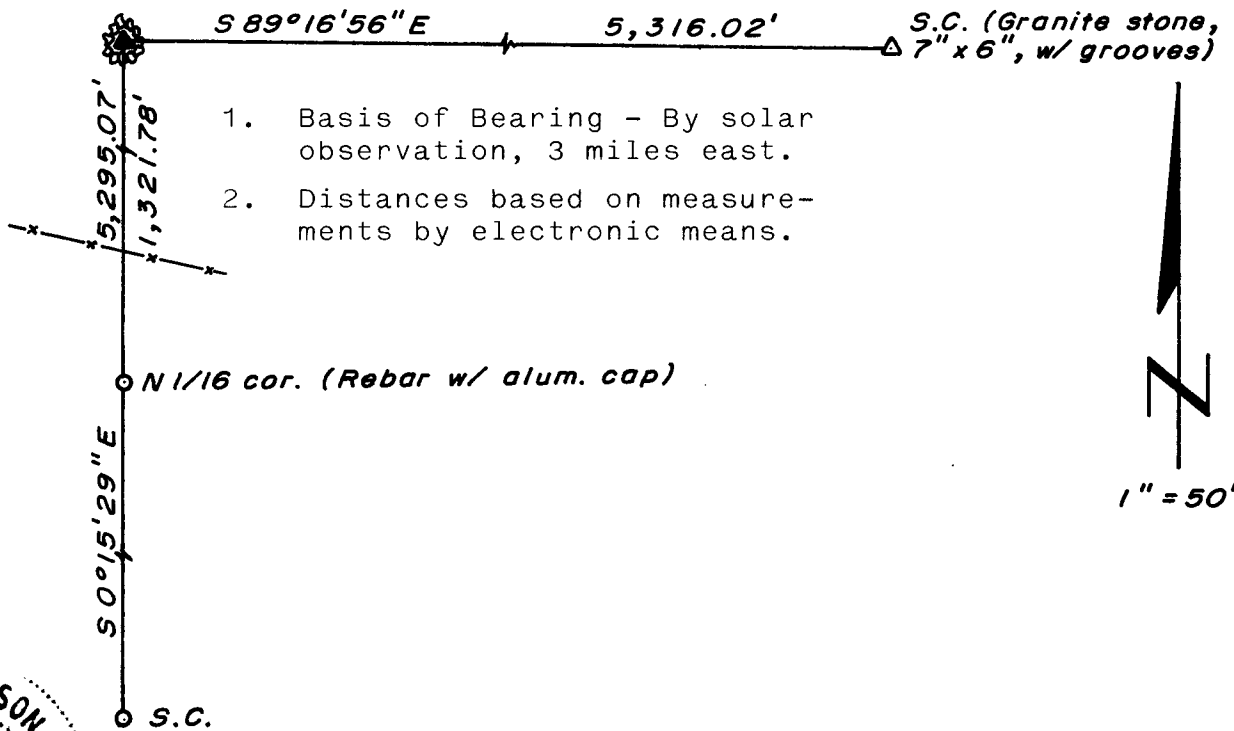
DESCRIPTION OF CORNER EVIDENCE FOUND, AND ORIGINAL RECORD (If known)

LOCATION Found 16" x 8" x 6" granite boulder, with grooves, in rock mound.
 S.31 S.32
 S. 6 S. 5 G.L.O. record - Unknown
 T.16N., R.66W. (Set by Edwin James, August 1870)
 T.15N., R.66W.
 6th P.M.

DESCRIPTION OF MONUMENT AND ACCESSORIES ESTABLISHED TO PERPETUATE THE ORIGINAL LOCATION OF THIS CORNER:

At the corner: Set stone deeper in ground; freshened 5 grooves on east, 1 groove on west and chiseled "X" on top.
 Accessories: Rebuilt rock mound around corner monument.

SKETCH, WITH COURSE AND DISTANCE TO ADJACENT CORNER IF DETERMINED IN THIS SURVEY.
 (May Sketch or Paste Reproduction on Reverse Side.)



I, R.L. Hudson certify that I have carefully performed ~~or reviewed~~ the work done on the diagrammed corner as reported on this recordation form and approve the same.

R.L. Hudson Wyoming L.S. No. 519
 Signature of Surveyor Registration No.

STATE OF WYOMING,
 Office of Clerk and Recorder,
 County of _____

This "corner record" was filed for record on the 5 day of May, 1978, was noted on the cross-index plat and is assigned page No. _____, in book No. _____.

Janet C Whitehead
 County Official

Cross Index No. _____	T. _____	R. _____	Mer. _____
<u>A5</u>	T. <u>1566</u>	R. <u>66</u>	Mer. _____
<u>25</u>	T. <u>16</u>	R. <u>66</u>	Mer. _____
_____	T. _____	R. _____	Mer. _____
_____	T. _____	R. _____	Mer. _____
_____	T. _____	R. _____	Mer. _____

A-5 15-66